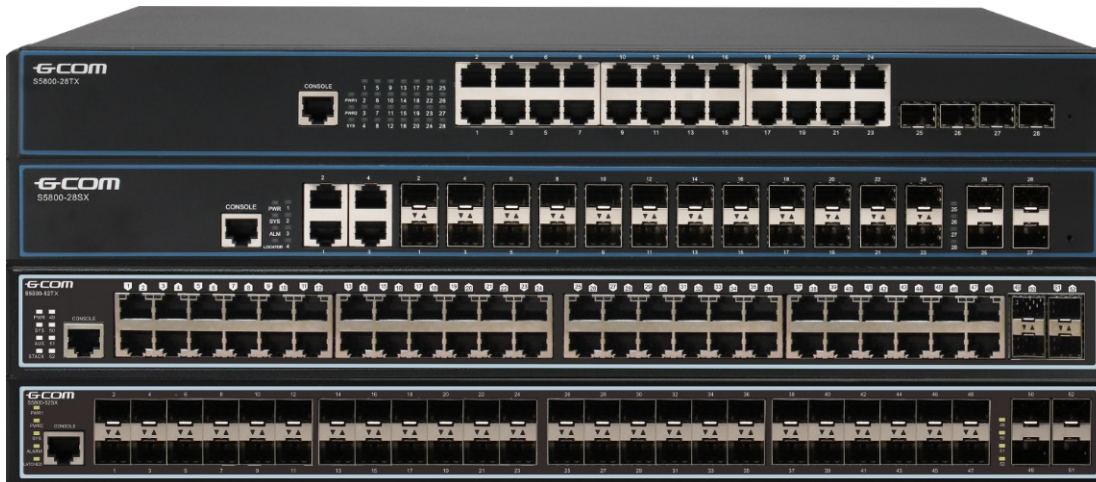


## S5800 Series Full Gigabit Secure Routing Switch

S5800 series is high-performance, carrier-grade cassette switch designed for operators and customers of all sizes of enterprise networks. It can meet the needs of various scenarios for Gigabit aggregation and Gigabit access. S5800 provides high-density Gigabit interface, powerful processing capabilities, high flexibility, rich security and flexible QoS capabilities. It provides carrier-class reliability design for 1+1 hot backup, and provides IPv4/IPv6 line-speed traffic forwarding capabilities, carrier-class security features and rich service features. The S5800 series is targeted at the core convergence of the enterprise network, the edge convergence of the operator metro area network, IDC Gigabit access and other scenarios.



**S5800-28TX**



- Switch capacity 128Gbps
- Packet forwarding rate 95.2Mpps
- 24 \* 10/100/1000Base-T
- 4 \* 10GE SFP+
- 1+1 Redundant power
- Support stacking
- Full load power consumption <40W
- 440mm (W) \*220mm (D) \*44mm (H)

**S2750 18T**  
**S5800-28SM**

**S5800-28SX**



- Switch capacity 128Gbps
- Packet forwarding rate 95.2Mpps
- 20 \* 100/1000Base-X SFP
- 4 \* Combo port
- 4 \* 10GE SFP+
- 1+1 Redundant power
- Support stacking
- Full load power consumption <40W
- 440mm (W) \*280mm (D) \*44mm (H)

**S5800-52TX**



- Switch capacity 176Gbps
- Packet forwarding rate 130.9Mpps
- 48 \* 10/100/1000Base-T
- 4 \* 10GE SFP+
- 1+1 Redundant power
- Support stacking
- Full load power consumption <60W
- 440mm (W) \*300mm (D) \*44mm (H)

**S5800-52SX**



- Switch capacity 176Gbps
- Packet forwarding rate 130.9Mpps
- 48 \* 100/1000Base-X SFP
- 4 \* 10GE SFP+
- 1+1 Redundant power
- Support stacking
- Full load power consumption <70W
- 440mm (W) \*300mm (D) \*44mm (H)

### Product Specification

Item	S5800-28TX	S5800-28SX	S5800-52TX	S5800-52SX
Switch Capacity	128Gbps	128Gbps	176Gbps	176Gbps
Forwarding Rate (Ipv4 / Ipv6)	95.2Mpps	95.2Mpps	130.9Mpps	130.9Mpps
Memory & Storage	512MB SDRAM&16MB flash memory			
Redundancy Design	1+1 power redundancy			
Power Supply	AC: 90 ~ 260V, 50 ~ 60Hz			
Power Consumption	full power≤30W idle power ≤13W	full power≤40W idle power ≤15W	full power≤60W idle power ≤30W	full power≤70W idle power ≤35W
Dimensions (W * H * D)	440mm×220mm×44mm	440mm×280mm×44mm	440mm×300mm×44mm	440mm×300mm×44mm
Weight	≤3kg	≤3kg	≤3.5kg	≤3.5kg
Environmental Requirements	operating temperature:-10°C ~ 55°C relative humidity: 10% ~ 90%, non-condensed			

### Service Features

Item	S5800 Series	
L2 Features	MAC	Support16KMAC Address; Support MAC Black Hole; Support Port MAC Limit;
	VLAN	Support4K VLAN entries; Support VLANs based on ports, MACs, protocols, and IP subnets; Support Port QinQ and Flexible QinQ (Stack VLAN); Support VLAN Swap, VLAN Remark, and VLAN Translate; Support PVLAN for port isolation and save common VLAN resources; Support GVRP;
	Spanning Tree	Support STP/RSTP/MSTP; Support remote loop detection;
	Port	Supports bidirectional bandwidth control; Support static and dynamic LACP; Support port and flow mirroring;
Safety Features	User Safety	Support Anti-ARP-spoofing; Support Anti-ARP-flooding;

		<p>Support IP source guard to automatically create IP+MAC+Port+VLAN binding table;</p> <p>Support port isolation to isolate packets between ports;</p> <p>Support MAC address binding to port and port MAC address filtering;</p> <p>Supports IEEE 802.1x and AAA/Radius user authentication;</p>
	Equipment Safety	<p>Support the control layer to prevent various DOS attacks and virus attacks against the CPU;</p> <p>Support SSHv2 Secure Shell;</p> <p>Support SNMP v3 encryption management;</p> <p>Support Security IP for Telnet login and password login;</p> <p>Adopt hierarchical protection to prevent unauthorized users from trespassing;</p>
	Network Safety	<p>Support MAC-based ARP traffic detection;</p> <p>Support ARP packet suppression or user blocking based on ARP traffic detection;</p> <p>Support dynamic ARP table-based binding;</p> <p>Support IP+VLAN+MAC+Port binding;</p> <p>Support L2 to L7 ACL flow filtration mechanism at the 80 bytes of the head of user-defined packets;</p> <p>Support auto off on port broadcast / multicast packet suppression/dangerous port;</p> <p>Support URPF;</p> <p>Support DHCP Option82 and PPPoE + to upload user physical location;</p> <p>Support clear-text and MD5 authentication for OSPF, RIPv2 and BGPv4 packets;</p>
IP Routing	IPv4	<p>Support ARP proxy;</p> <p>Support DHCP relay;</p> <p>Support DHCP server;</p> <p>Support static routes;</p> <p>Support RIPv1/v2;</p> <p>Support OSPFv2;</p> <p>Support BGPv4;</p> <p>Support MPLS LDP;</p> <p>Support MPLS VPN;</p> <p>Support VPLS;</p> <p>Support ECMP;</p> <p>Support policy routing;</p> <p>Support routing policy;</p>
	IPv6	<p>Support ICMPv6;</p> <p>Support ICMPv6 redirection;</p> <p>Support DHCPv6;</p> <p>Support ACLv6;</p> <p>Support OSPFv3;</p> <p>Support RIPng;</p>

Service Features	ACL	<p>Support standard ACL &amp;Extended ACL;</p> <p>Support time Range ACL;</p> <p>Support flow classification and flow definition based on source/destination MAC address, VLAN, 802.1p, ToS, DiffServ, source/destination IP(IPv4/IPv6) address, TCP/UDP port number, protocol type, etc;</p> <p>Support packet filtration of L2 ~ L7 deep to 80 bytes of IP packet head;</p>
	QoS	<p>Support rate limit for receiving or forwarding packets from a port or a custom flow;</p> <p>Support normal traffic policing and 2Rate3color for customized flows;</p> <p>Support CAR(Committed Access Rate), Traffic Shaping and flow statistics;</p> <p>Support Packet mirror and redirection;</p> <p>Support priority remark to port or self-defined flow and provide 802.1P, DSCP priority to remark;</p> <p>Support queue scheduling modes such as SP, WRR, and SP+WRR;</p> <p>Support congestion avoidance mechanisms, including Tail-Drop</p>
	Multicast	<p>Support IGMPv1/v2/v3;</p> <p>Support IGMPv1/v2/v3 snooping;</p> <p>Support IGMP filter;</p> <p>Support MVR and cross-VLAN multicast replication;</p> <p>Support IGMP fast leave fast;</p> <p>Support IGMP proxy;</p> <p>Support PIM-SM/PIM-DM/PIM-SSM;</p> <p>Support MLDv2/MLDv2 snooping;</p>
Reliable Features	Loop Protection	<p>Support ERRP and ERPS(loop healing time &lt;50ms);</p> <p>Support loopback-detection;</p>
	Link Protection	<p>Support FlexLink link backup (link healing time &lt;50ms);</p> <p>Support RSTP/MSTP link healing hardware acceleration (loop healing time &lt;1s);</p> <p>Support LACP dynamic link aggregation (link healing time &lt;50ms);</p> <p>Support BFD link detection;</p>
	Equipment Protection	<p>Support VRRP host backup;</p> <p>Support dual fault-tolerant backups of host programs and configuration files;</p> <p>Supports 1+1 power backup;</p>
Maintenance Features	Network Maintenance	<p>Support real-time traffic, utilization, and packet statistics for Telnet-based ports</p> <p>Support RFC3176 sFlow traffic analysis, which can realize protocol-based or address-based traffic monitoring and statistic;</p> <p>Support LLDP;</p> <p>Support 802.3ah Ethernet OAM;</p> <p>Support data logging and RFC 3164 BSD syslog protocol;</p> <p>Support Ping and Traceroute;</p>
	Equipment	<p>Support stacking;</p>

	Management	<p>Support CLI, console port, Telnet, and WEB configuration management;</p> <p>Support SNMPv1/v2/v3;</p> <p>Support RMON (Remote Monitoring) Group 1, 2, 3, 9 MIBs;</p> <p>Support NTP;</p> <p>Support GN.LinkII Server;</p> <p>Support NGBNView NMS;</p>
--	------------	---

### Ordering Information

Model	Product Description
S5800-28TX	24*10/100/1000BaseT,4*10GE SFP+, 1+1 redundant power supplies
S5800-28SX	20*100/1000BaseX SFP,4 Combo GE, 4*10GE SFP+,1+1 redundant power supplies
S5800-52TX	48*10/100/1000BaseT, 4*10GE SFP+, 1+1 redundant power supplies
S5800-52SX	48*100/1000BaseX SFP, 4*10GE SFP+, 1+1 redundant power supplies