

GLK 3500

Mini-Pro Optical Time-Domain Reflectometer



3.5 inch
3.5 inch Color LCD

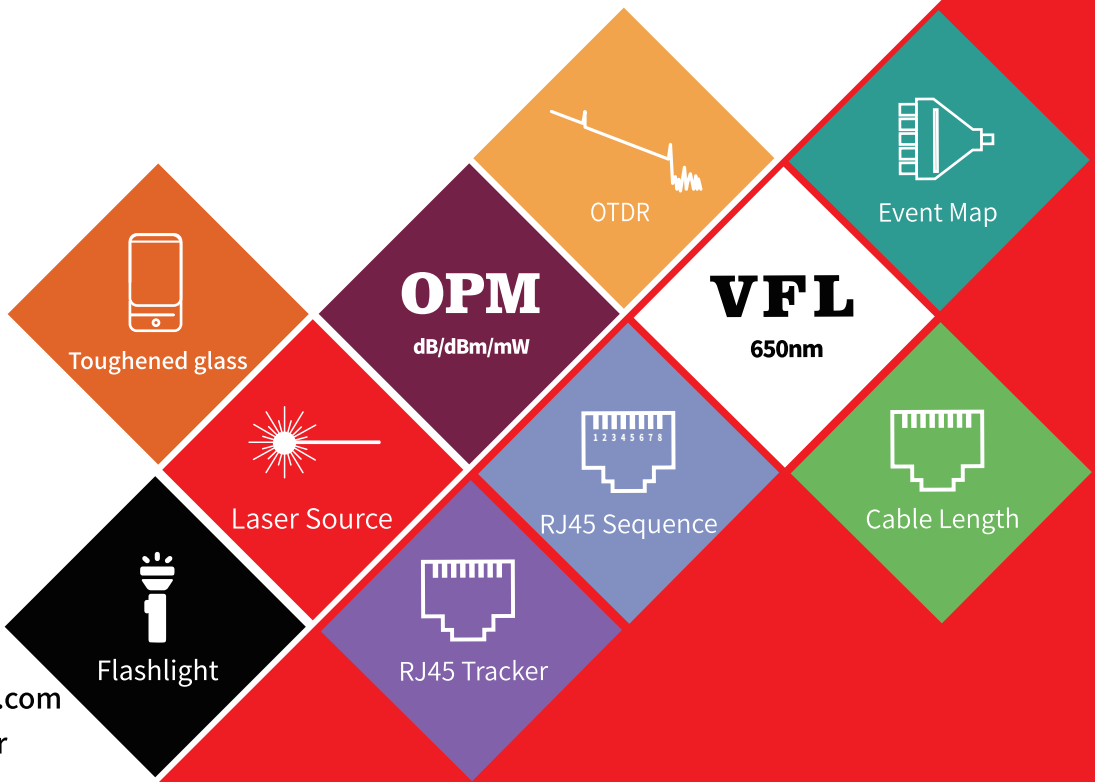
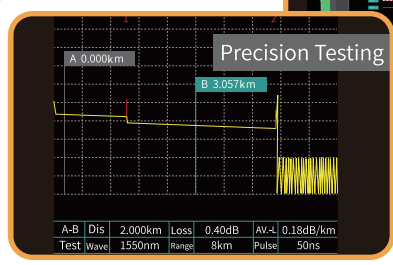
9 Functional Modules

26 dB
26dB Dynamic Range

iLNM-EVENT MAP

Fiber & RJ45
Photoelectric Integration
Multi-Functions

Make a product, win the world's admiration



Tel: +86-532-58909199
Web: www.grandlinkin.com
E-mail: grandlink@grandlinkin.com
Add: International Trade Center
No.877, Lijiangxi Rd, West coast new district, Qingdao, China



26dB Dynamic Range
80km Precision Test
Online Detection -APD Effective Protection
2.5m Event Blind Zone



OTDR Optical Time Domain Reflectometer
OPM -50~+26dBm Optical Power Meter
VFL Visual Fault Locator
LS Stabilized Light Source
RJ45 Ethernet Cable Sequence



Dual-wavelength OTDR
iLOM-Event Map
RJ45 Cable Length Measurement
RJ45 Line-Tracker Function



One-click Automatic Test
File Auto-saving
Test Results Automatic Analysis



SOR File Batch Processing
Remote Upgrade
Batch Export of USB Data Files



12h Continuous measurement time
20h Super-long Standby
Working Temperature: -10°C ~ +50°C

Technical Specifications

Model	GLK3500
OTDR	
Wavelength	1310nm/1550nm±20nm
Fiber Type	G.652
Dynamic Range	26dB/24dB
Event Blind Zone	2.5m
ATT Blind Zone	8m
Test Range	500m~128km
Pulse Width	3ns~10us
Ranging accuracy	± (1m+ Sampling interval +0.005%×Test distance)
Loss accuracy	±0.2dB/dB
Sampling Points	16k~128k
Sampling resolution	0.05m~8m
Reflection accuracy	±3dB
Data Storage	Internal: ≥600; External: TF Card
Laser Safety Level	Class II
File format	SOR Standard file format
Connector	FC/UPC (Interchangeable SC、ST)
OPM	
Wave Range	800nm~1700nm
Interface Type	Universal Joint FC/SC/ST
Test Range	-50dBm~+26dBm
Uncertainty	±5%
Frequency Identification	CW/270/330/1k/2kHz
Calibration wavelength	850/980/1300/1310/1490/1550/1625/1650nm

LS	
LD Type	FP-LD
Wavelength	1310nm/1550nm±20nm
Output Power	≥-5dBm
Modulation Frequency	270/330/1k/2kHz
Stability	CW, ±0.5dB/15min (Test after 15 minutes of preheating)
Connector	FC/UPC (Interchangeable SC、ST)
VFL	
Wavelength	650nm±20nm
Output Power	≥10mW
Mode	CW/1Hz/2Hz
Connector	FC/SC/ST
RJ45 Cable Length Measurement	
Test Range	300m
Other Parameters	
Display	Toughened glass, 3.5 inch Color LCD
Data Interface	Micro USB
External storage	TF Card
Power Supply	Polymer Li-Battery: 3.7V, 4000mAh Adapter: 5VDC, 2A
Battery Life	Standby>20h; Measuring time>12h
Operating Temperature	-10°C~+50°C
Storage Temperature	-40°C~+70°C
Relative Humidity	0~95%Non Condensing
Size	173mm×82mm×37mm
Weight	≤350g

Note:

- ① Test temperature is $25^{\circ}\text{C}+2^{\circ}\text{C}$, maximum pulse width, the average time is more than 3 minutes.
- ② Test conditions of Event Blind Zone are min-range, min-pulse width, reflection loss of optical fiber end ($> 45\text{dB}$), typical value.

Functions:

OTDR / Event Map / OPM / LS / VFL / RJ45 Sequence / Flashlight / RJ45 Cable Tracker (include detector) / RJ45 Line length

NO.	NAME	QUANTITY	REMARKS
1	Host	1	Battery included
2	Adapter	1	
3	Data Line	1	
4	CD-ROM(Analysis software/User's Manual)	1	
5	User's Manual	1	
6	SC/UPC	1	
7	Qualification Certificate/ Service Guarantee Card	1	
8	Calibration Certificate	1	
9	Clean Cotton Slices	10	
10	Instrument Backpack	1	